

**English
Edge**
The real English learning experience

LIQVÍD

LEARNING THAT TAKES YOUR SHAPE

LIQVÍD

Presenting -

**NEW- AGE
English Learning
For The Future**



THAT GIVES YOUR STUDENTS A BETTER FOUNDATION

Background

Key insights (from user research and site visits)

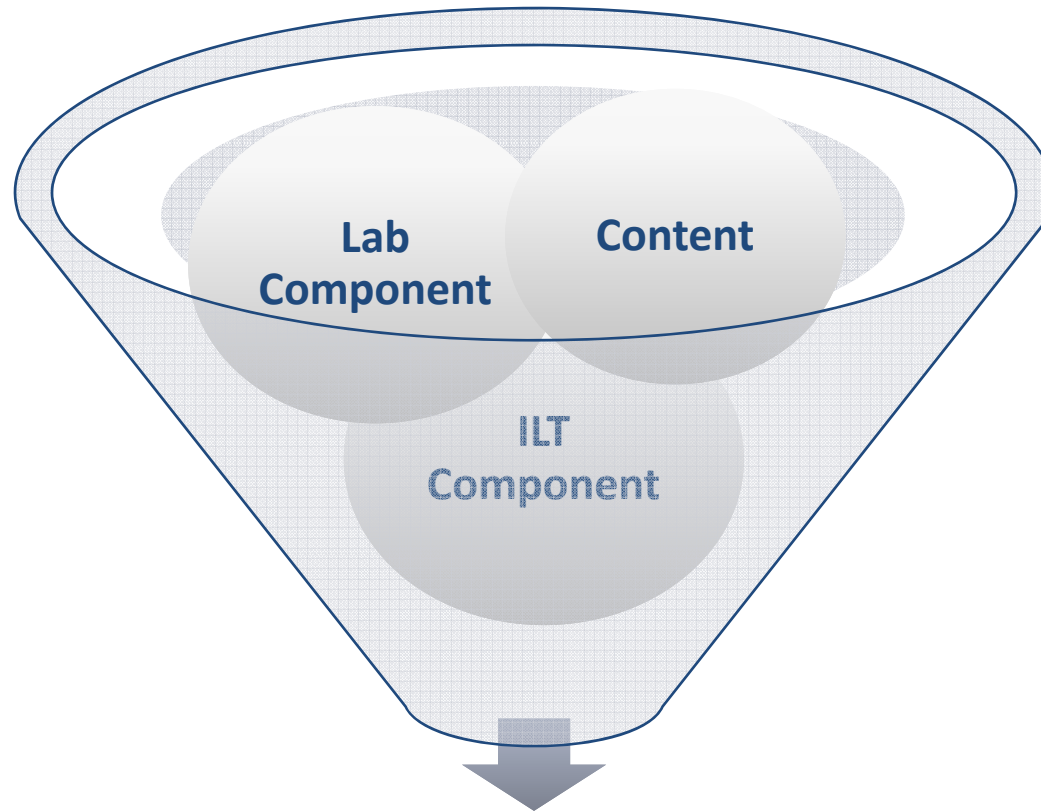
- Currently Language lab based solution, incl. lab console and content
- No clear models for the classroom
- Very little Indian content (incl. audio accent), most of the solutions are US/ UK based

Key needs

- Speaking practice
- Solutions linked to the class levels and curriculum
- Neutral accent
- Engaging content



Our Solution



**English
Edge**
The real English learning experience

Product Details

- **Lab Components:**
 - **LAB Console** : Teacher tool to centrally control and monitor all the student PCs simultaneously
 - **Assessments:** Teacher can select a test from the repository and share the same with the students based on requirement
- **Curriculum mapped and engaging content**
 - Content from a leading Indian publisher
 - Product reviewed by an expert panel
 - 30 sessions per class; 40 mins per session
 - 40% -50% speaking practice and 50- 60% other skills (L,R,W, V&G)
 - Age relevant look & feel and games to engage
- **Trainer Manual**
- **Guidelines and troubleshooting details**

Product details contd...

➤ **ILT component**

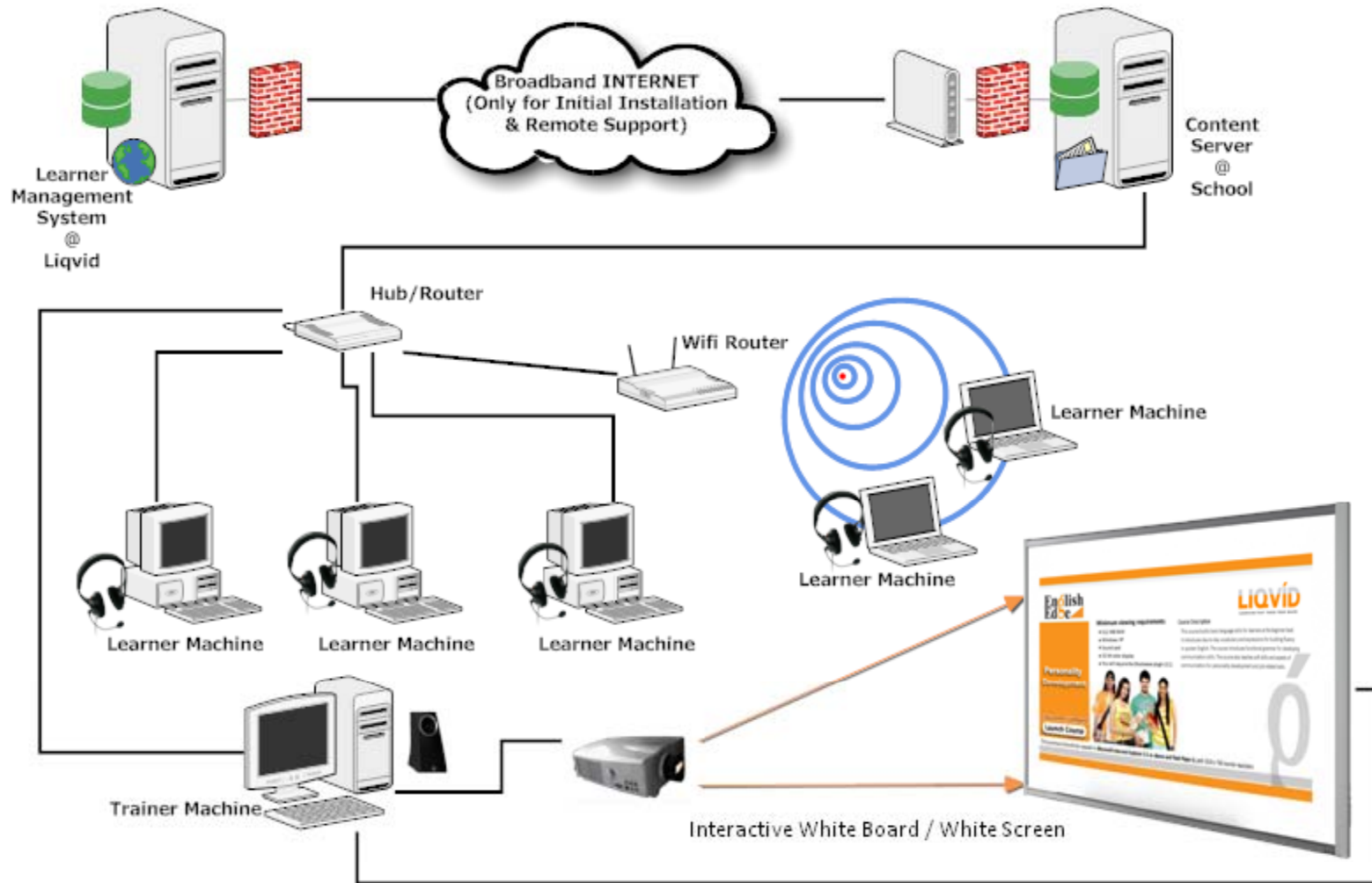
- Additional Value add activity in the class (as against compulsory LAB sessions)
- Teacher can pull out relevant activities based on the requirement
- 30 sessions per class; 40 mins per session
- Majority content focus on Speaking skills
- Trainer manual that spells out the guidelines

Content & Pedagogy Approach

- Publisher – Buzzword (Orient Blackswan)
- Communicative and functional approach (as against older grammar based approach)
- HOTS oriented – Application and understanding based
- Focus on speaking practice incl. pronunciation, syllable breakup, intonation
- More exposure to correct English sounds through immersion technique



The Topology



Features

- ✓ Curriculum aligned content
- ✓ Attractive and captivating interface and media rich look & feel
- ✓ Record–Compare tool for correct pronunciation and intonation;
- ✓ Absorbing games for greater engagement (games such as Hangman, Snakes & Ladders, Crosswords, Find the Picture etc.)
- ✓ Instant feedback on student performance
- ✓ Warm child centric voice which sets the right learning experience
- ✓ All audio/ voice in neutral accent

Screen Shot Of ILT Console

The screenshot displays the ILT Console interface, which is used for managing a classroom of computers. At the top, there is a toolbar with various control icons: Overview, Demo, Demo/window, Lock, Text message, Power on, Power down, Logon, Adjust/align, and Auto view. Below the toolbar is the 'Classroom-Manager' window, which contains a list of classrooms/computers and a grid of live feeds from each computer.

The 'Classrooms/computers' list is as follows:

Classrooms/computers	IP-address
Leonardo	
leo20	192.168.2.20
leo19	192.168.2.19
leo18	192.168.2.18
leo17	192.168.2.17
leo16	192.168.2.16
leo15	192.168.2.15
leo14	192.168.2.14
leo13	
leo12	
leo11	
leo10	
leo09	
leo08	
leo07	
leo06	
leo05	
leo04	192.168.2.4
leo03	192.168.2.3
leo02	192.168.2.2
leo01	192.168.2.1

The grid of windows shows various desktop environments, including Linux (Ubuntu) and Debian. A context menu is open over the 'leo14' window, listing the following actions:

- Show/hide
- Edit settings
- Remove
- Actions
 - Watch only (stops demo and unlocks screen)
 - Fullscreen demo
 - Window demo
 - Locked display
- View live and fullscreen
- Remote control
- Let student show demo
- Send text-message
- Logon user
- Logout user
- Make a snapshot

OUR Clients

- EnglishEdge Scholar successfully established in more than a **100** schools
- Clientele geographically spread across the country
- Overwhelming response by teachers as well as students

CLIENT SPEAK

"It's really an effective method, as children learn in a comfortable way through audio-visual aids"

"It's very innovative and will surely help the trainees to learn linguistic skills with proper understanding"

"This programme will be helpful to improve students' language skills. Side by side, it helps the teacher to improve her own skills"

"This software is really very interactive and helpful for students"

"The software provides us with considerable information about LSRW. It was nice to interact with the content"

*Detailed client list available on request

LIQVID'S RECOGNITIONS



**SOCIETY FOR TECHNICAL
COMMUNICATION**

LIQVID has won STC excellence awards, for last two consecutive years

Deloitte.

Ranked amongst the fastest growing technology companies in India and also ranked amongst the top 500 in Asia Pacific, for last two consecutive years



Nominated by British Council, U.K. amongst the top twelve technology –based, innovative English Learning product



Brandon Hall Gold Award winner, 2007



Recognized by Nasscom as Top 100 IT innovators for two consecutive years 2006 & 2007



LIQVID has been adjudged as one among top 100 small businesses of the year 2010. The awards were organized by FRANCHISE INDIA and supervised by Ernst & Young.

LIQVID'S ALLIANCES



Liquid's association with BBC for its English Edge programme boosts the credibility of its solutions. BBC is recognized as a valued, trusted and authoritative brand in many English Language teaching markets



UNIVERSITY of CAMBRIDGE
ESOL Examinations

Authorised Centre

Liquid has joined hands with the University of Cambridge ESOL Examinations and has been appointed as their authorized examination centre. Cambridge ESOL is the world's leading provider of international English language qualifications for all learners of English

**English
Edge**
The real English learning experience

THANKS

LIQVÍD

LEARNING THAT TAKES YOUR SHAPE

LIQVÍD